

## WEDNESDAY 24TH JULY 2019

Youth Races from 5:00pm  
 Bioracer Classic @ 7:00pm  
 Sheffield Grand Prix @ 8:15pm  
 Incorporating the Doug Bond Challenge Trophy



Promoted by



**FREE**  
 OFFICIAL  
 EVENT GUIDE

@SheffGrandPrix

# #SHEFFIELDGP

2018 Winner, Topsy Walker, Team Wiggins.

# There's something wonderful in the making

[welcometosheffield.co.uk](http://welcometosheffield.co.uk)  
[@VisitSheffield](https://www.instagram.com/VisitSheffield)

**Sheffield**



# > A welcome from Sheffield

**Professional cycle racing returns again to the streets of Sheffield**



I'm delighted that Sheffield's Grand Prix returns for its eighth year and being part of the HSBC UK British Cycling National Circuit Series.

Sheffield will see some exciting racing from both professionals and amateurs as they race around the city centre streets.

I'd like to thank the events sponsors for the support they show, Sheffrec Cycling Club for the organisation, Sheffield City Councils events team and the band of volunteers who without them this event would not be able to take place year on year.

Not forgetting the riders and staff teams from around the country. I'm sure you will find something special in tonight's race here in our City centre, especially the cobbles.

I hope that people watching will be inspired to either take up the sport themselves, or realise that with hard work and dedication success is there to be had.

I'm aware Sheffield has a special connection with cycling being so close to some wonderful cycling country in the Peak District. I'm sure we'll all see some thrilling cycling this evening in the city centre, so I hope you enjoy the races and also your time in Sheffield.



The Lord Mayor of Sheffield, Councillor Tony Downing.





## > Our 8th year...

### **Action packed cycle racing back in the City Centre for another year**

We are delighted that City Centre Cycle Racing returns to the streets of Sheffield. The 2019 Sheffield Grand Prix is again part of the HSBC UK | British Cycling Elite Circuit Race Series and incorporates the Bioracer Classic support race for 2nd, 3rd & 4th category riders and under 16 races for youth riders. This evenings races will be full of action packed cycle racing and will provide a great nights entertainment both for the family and cycling fans. We have on going support from Bioracer and Browns Brasserie & Bar. Support from other local businesses include Je Jame Cycles, Trek Sheffield, Cocker and Carr, JC Bird, Steel City Marketing, and Sheffield City Council. A special thanks goes out to Sheffield design agency, Blue Strawberry Elephant for the design of all our promotional material, event branding, social media and event website.

Live commentary commences at 5:00pm and the first event sees youth A & B riders taking to the streets for the first time. The first race will be a girls race followed by a boys race at 6:00pm. The Bioracer Classic support race will start at 7:00pm prompt. This race, which is packed full of talented riders from all the local clubs and teams. A winner will be hard to predict but the race will be set at a fast pace from start to finish.

The men's Sheffield Grand Prix race will start at 8:15pm prompt. This race will feature all the top domestic professional teams including, 2018 Sheffield Grand Prix winner, Joey Walker. Joey will be back to defend his title riding for his new team, Madison Genesis. Riders from Team Wiggins Le Col, Vitus Pro Cycling p/b Brother UK, Canyon dnb p/b Bloor Homes, Swift Carbon Pro Cycling, Saint Piran, Ribble Pro Cycling and various other teams will be pushing hard on the pedals for the win. Keep a look out for local team, Cycling Sheffield Giant Sheffield who will be racing on home roads. Every team will want to place their rider on the top step of the podium and claim the Doug Bond Challenge Trophy - one thing that will be guaranteed, the pace will be fast from start to finish.

Riders will travel anticlockwise around the course and on leaving the start will travel down Pinstone Street, left onto Furnival Gate down to the roundabout and sweep left on Arundel Gate past Sheffield Hallam University. Riders will turn left at the Crucible Theatre and make their way up Norfolk Street. From here riders will ride on the Cocker & Carr cobbled section turning right onto Surrey Street before completing 1 full lap which is 1.4 kilometers. The finish area will be on Pinstone Street.

Please pay a visit to the race village positioned at the top of Fargate and in the Peace Gardens with trade stands from Trek Sheffield, JE James Cycles and some tasty food outlets including a licenced bar. Food and refreshments will be available throughout the night so please pay them a visit.



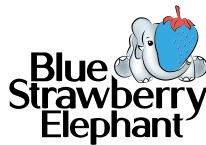
# Our 26 years...

...have taught us many things, especially...



While some design agencies offer 110% effort,  
our customers have reported 175% year on year sales growth.

Want to know how?



0114 255 9993

[bluestrawberryelephant.com](http://bluestrawberryelephant.com)

BRAND • PRINT • WEB • JOY

BRASSERIE & BAR

· BROWNS ·

ESTABLISHED 1973

Browns Sheffield occupies one of the most tranquil spots imaginable, given its city centre location; overlooking the award winning Peace Gardens. The bar and restaurant are set in what used to be the city's Army & General Stores, and are set in the heart of Sheffield's theatre district.

After the huge support which Sheffield showed in the recent Tour de Yorkshire, we are proud to be supporting the 2019 Sheffield Grand Prix for a 7th year. The interest and backing of the recent significant event has highlighted how sport is able to bring communities together, be it the farmers in their tractors or the city dwellers gathering on the streets.

We believe that we hold the perfect location and passion for food, drink and good old fashioned hospitality to see the smooth running of the event from start to finish.

Providing all refreshments needs for the cyclist, spectator and passer-by throughout the whole day. To finish off, we will be celebrating all those who competed and supported in this great sporting event with an after race party; we hope that you join us at some point during the day to share in the excitement.



[www.browns-restaurants.co.uk](http://www.browns-restaurants.co.uk)

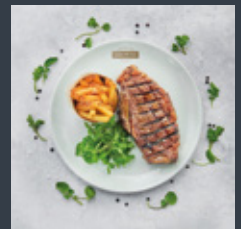
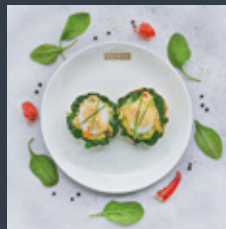
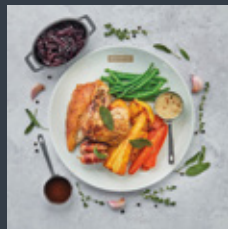
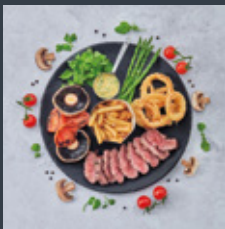


## A warm welcome awaits you at Browns Sheffield

The Browns building in Sheffield used to be the city's Army & General Stores.

Although we're right in the city centre, it's a beautifully tranquil spot that overlooks the Peace Gardens, an award winning public space with amazing water features and memorials.

Join us for a relaxing, brasserie brunch, lunch, afternoon tea or dinner, made with quality, fresh, seasonal ingredients. Or if you don't fancy a meal, our expert, friendly teams will look after you in our stylish cocktail bar area, where you can enjoy a crafted cocktail (or two), a glass of fine wine or Champagne and graze on some delicious bar snacks. However you spend your time in our Sheffield restaurant, you can be certain it will be time well spent.



### BROWNS BAR & BRASSERIE

ST PAUL'S CHAMBERS • ST PAUL'S PARADE • SHEFFIELD S1 2JL  
TELEPHONE: 0114 276 6710 • [WWW.BROWNS-RESTAURANTS.CO.UK](http://WWW.BROWNS-RESTAURANTS.CO.UK)

# cocker &carr

Estate & Letting Agents

Professional advice.  
Personal approach.



0114 268 7777

[www.cockerandcarr.co.uk](http://www.cockerandcarr.co.uk)

11-13 Sandygate Road  
Sheffield, S10 5NG



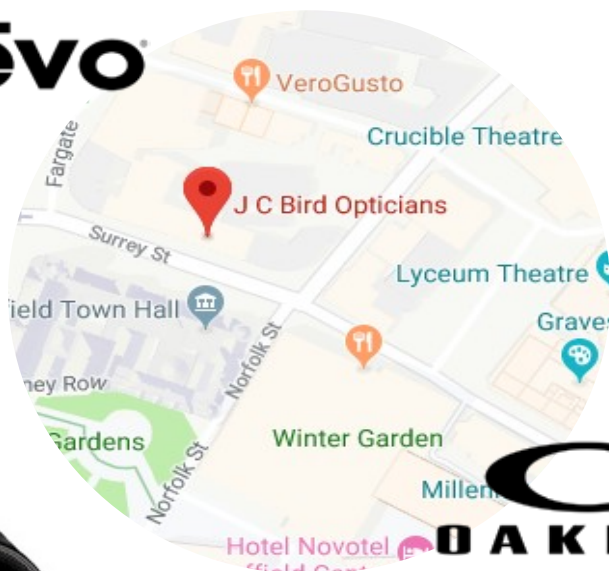
41-43 Surrey Street  
S1 2LG  
0114 2701423  
info@jcbird.co.uk  
www.birdopticians.co.uk



**SPECIAL OFFERS AND PRIZES**

**24th-27th JULY 2019**

**Rēvo**



**OAKLEY**

*Independent family run Opticians  
Providing quality eyecare  
since 1983*



# TREK

SHEFFIELD FOX VALLEY



## SHEFFIELD GRAND PRIX OFFER

# 20% OFF

BRING YOUR SHEFFIELD GP RESULT TO THE STORE  
ANYTIME AFTER THE EVENT AND RECEIVE A  
FREE COFFEE AND 20% OF ALL PARTS AND  
ACCESSORIES AND LEVEL 1 BIKE FITS.

## WELCOME TO THE FAMILY

### LOVE IT OR WE'LL TAKE IT BACK

If you're not 100% happy with your purchase, bring it back within 30 days for a refund or exchange.

### LOW PRICE GUARANTEE

We'll match any price for products we carry in-store or on [trekbikes.com](http://trekbikes.com).

### 24-HOUR SERVICE FOR ALL MAKE AND MODELS

Our skilled technicians will service your bike within 24 hours, or we'll give you a loaner for free.

### THE EASIEST PLACE TO SHOP

Everyone is welcome, and we're here to help!

## INSTORE

### E-BIKES

We're excited to get people riding e-bikes, and we know there are lots of questions about them.

### SERVICE PACKAGES

Regular maintenance is the key to keeping your bike running smoothly ride after ride. Explore the service packages and pop in or call today to schedule your next tune-up, we service all makes and models.

### TREK PRECISION FIT

Improve on-bike comfort and performance with a professional fit from the world's best trained technicians.

### PROJECT 1

Design your dream ride, then we'll bring it life in our Project One workshop. Keep it on the road with the Madone, Domane, Speed Concept and Emonda, or take your dream to the trail with Fuel EX 29, Procaliber SL or Top Fuel.

















## > Event Schedule

- 09:00 Invictus Trials Cycling Event
- 15:30 Open Public Ride - Free for everyone to ride the full GP circuit - 1 Hour
- 17:00 Youth A&B girls race - 30 minutes on full GP circuit**
- 18:00 Youth A&B boys race - 30 minutes on full GP circuit**
- 18:40 Youth race podium presentations
- 19:00 Bioracer Classic race start - 40 minutes plus 5 laps**
- 19:50 Bioracer Classic race finish
- 20:05 Bioracer Classic race podium presentations
- 20:15 Sheffield Grand Prix race start - 50 minutes plus 5 laps**
- 21:15 Sheffield Grand Prix race finish
- 21:25 Sheffield Grand Prix & overall series podium presentations
- 23:00 All roads re-open



[www.sheffieldgrandprix.com](http://www.sheffieldgrandprix.com)

# Event Map

-  Start / Finish Line
-  Race Circuit
-  Cocker & Carr Cobbled Section
-  Pit Area
-  Browns VIP Enclosure
-  Officials Car Parking
-  Elite Team Parking
-  Judging Area
-  Podium Truck
-  Crossing Point
-  Trade Stands
-  Food Village
-  Browns Brasserie & Bar Enclosure
-  First Aid Point



# BIO RACER

SPEEDWEAR



**TREK**  
SHEFFIELD FOX VALLEY

**JeJamescycles**

**Blue  
Strawberry  
Elephant**

BRASSERIE & BAR

**BROWNS**

ESTABLISHED 1973



# > BIORACER CLASSIC

Race start: 19:00 - duration: 40 minutes plus 5 laps

NO.	Name		Club / Team	Category
1	Jack	Delaney	3RT	3rd
2	Samuel	Wadsworth	3RT	2nd
3	Sam	Storer	8point8 Group	3rd
4	Andy	Bishop	Andy Moore Autocentres Racing	2nd
5	Aaron	Chambers-Smith	Andy Moore Autocentres Racing	2nd
6	Marc	Layfield	Andy Moore Autocentres Racing	2nd
7	Oliver	Dixon	BC Private Member	4th
8	Phil	Oliver	BC Private Member	4th
9	Ben	Samuels	BC Private Member	2nd
10	Jack	Ford	Bryan Steel Academy	2nd
11	Jonathon	Oxley	Bryan Steel Academy	2nd
12	George	Edwards	Cowley Road Condors	3rd
13	William	Foster	Cyclesense	2nd J
14	Nathan	Miller	Derby Mercury RC	3rd
15	Michael	Chadwick	Doncaster Whls CC	2nd
16	Joe	Pidcock	Fensham Howes - MAS Design	2nd J
17	James	Wordsworth	Fensham Howes - MAS Design	2nd J
18	Michael	Bray	Geared Up & CN Cycles RT	2nd
19	Oliver	Humphreys	Geared Up & CN Cycles RT	3rd
20	Aidan	Lawrence	Green Jersey RT	A
21	Matthew	Wilkins	High Peak Cycles RT	3rd
22	James	Little	Holmfirth Cycling Club	3rd
23	William	Abbott	Innovation Racing	2nd J
24	Curtis	Green	Js Cycle Shack	4th
25	Harry	Crew	Leisure Lakes Bikes.com	3rd
26	Jonathan	Hornblow	Leisure Lakes Bikes.com	2nd
27	Declan	Hudson	Liverpool Century RC	2nd
28	Gregory	Carr	Macclesfield Wheelers	3rd
29	Will	King	Meudon Pedal Heaven Le Col RT	2nd

## > BIORACER CLASSIC

Race start: 19:00 - duration: 40 minutes plus 5 laps

NO.	Name		Club / Team	Category
30	Robbie	Pollard	Otley CC	2nd
31	Karl	Wooffindin	Out Of The Saddle	3rd
32	Alexander	Hutchinson	Prologue Racing Team	2nd
33	Thomas	Wood	Prologue Racing Team	2nd
34	Sarah	Briggs	RFDA	3rd LJ
35	Abi	Smith	RFDA	2nd LJ
36	Kieran	Riley	ROTOR Race Team	A
37	Jon	Cooper	Sheffrec CC	4th
38	Steven	Jackson	Sheffrec CC	3rd
39	Tom	Andrews	Team B38 / Cycles In Motion	2nd
40	Mark	Jagger	Team B38 / Cycles In Motion	2nd
41	Robert	Telford	Team B38 / Cycles In Motion	2nd
42	Andrew	Cutts	Team Bottrill	2nd
43	Liam	Davison	Team JRC	3rd J
44	George	Wood	Team JRC	3rd J
45	Thomas	Bates	Team Wheelguru	2nd J
46	Jack	Brough	The MI Racing Academy	A
47	Joshua	Giddings	The MI Racing Academy	A
48	Luke	Hind	THRE Datawolves RT	2nd
49	Ryan	Ashcroft	Wheelbase CabTech Castelli	2nd
50	Tyla	Loftus	Wheelbase CabTech Castelli	3rd
51	Harry	Lee	Wold Top The Edge RT	2nd
52	David	Norris	Wold Top The Edge RT	2nd
53	Thomas	Ramsay	Wold Top The Edge RT	2nd
54	Joshua	Ravn	Wold Top The Edge RT	2nd
55	Nathan	Smith	Wold Top The Edge RT	2nd
56	Joshua	Van Den Bos	Wold Top The Edge RT	2nd
57	Giulio	Cervi	Wolverhampton Whls	2nd

# > SHEFFIELD GRAND PRIX

Race start: 20:15 - duration: 50 minutes plus 5 laps

NO.	Name		Team/Club	Category
1	Joey	Walker	Madison Genesis	Elite
2	Jonathan	Dibben	Madison Genesis	Elite
3	Richard	Handley	Madison Genesis	1st
4	Tobyn	Horton	Madison Genesis	Elite
5	Jonathan	McEvoy	Madison Genesis	Elite
6	Thomas	Moses	Madison Genesis	Elite
7	Jonathan	Mould	Madison Genesis	Elite
8	George	Pym	Madison Genesis	1st
9	Matthew	Bostock	Canyon dhh p/b Bloor Homes	Elite
10	Jacob	Hennessy	Canyon dhh p/b Bloor Homes	1st
11	Charles	Page	Canyon dhh p/b Bloor Homes	Elite
12	Thomas	Stewart	Canyon dhh p/b Bloor Homes	Elite
13	Charlie	Tanfield	Canyon dhh p/b Bloor Homes	Elite
14	Andrew	Tennant	Canyon dhh p/b Bloor Homes	Elite
15	Rory	Townsend	Canyon dhh p/b Bloor Homes	Elite
16	William	Brown	Ribble Pro Cycling	1st
17	Chris	Sherrifs	Ribble Pro Cycling	Elite
18	Jacob	Tipper	Ribble Pro Cycling	Elite
19	William	Bjergfelt	SwiftCarbon Pro Cycling	Elite
20	Stephen	Bradbury	SwiftCarbon Pro Cycling	Elite
21	Ben	Hardy	SwiftCarbon Pro Cycling	2nd
22	Edward	Laverack	SwiftCarbon Pro Cycling	1st
23	Julian	Varley	SwiftCarbon Pro Cycling	1st
24	Peter	Williams	SwiftCarbon Pro Cycling	1st
25	George	Wood	SwiftCarbon Pro Cycling	Elite
26	Gabriel	Cullaigh	Team Wiggins Le Col	Elite
27	Mark	Donovan	Team Wiggins Le Col	Elite
28	Jacques	Sauvagnargues	Team Wiggins Le Col	1st
29	Robert	Scott	Team Wiggins Le Col	Elite
30	Graham	Briggs	Vitus Pro Cycling p/b Brother UK	Elite
31	Ed	Clancy	Vitus Pro Cycling p/b Brother UK	Elite
32	Adam	Kenway	Vitus Pro Cycling p/b Brother UK	1st
33	Dylan	Kerfoot-Robson	Vitus Pro Cycling p/b Brother UK	1st
34	Christopher	Latham	Vitus Pro Cycling p/b Brother UK	Elite
35	Michael	Mottram	Vitus Pro Cycling p/b Brother UK	Elite
36	Frederik	Scheske	Vitus Pro Cycling p/b Brother UK	Elite
37	Ali	Slater	Vitus Pro Cycling p/b Brother UK	Elite
38	David	Bolland	Andy Moore Autocentres Racing	1st
39	Damien	Clayton	Andy Moore Autocentres Racing	Elite
40	Dean	Watson	Andy Moore Autocentres Racing	1st
41	Mark	Robertson	Army Cycling Union	1st
42	Kieran	Simcox	Army Cycling Union	2nd
43	Jack	Webb	Army Cycling Union	2nd

# > SHEFFIELD GRAND PRIX

Race start: 20:15 - duration: 50 minutes plus 5 laps

NO.	Name		Team/Club	Category
44	Charlie	Renshaw	Cycling Sheffield Giant Sheffield	1st
45	Kieran	Savage	Cycling Sheffield Giant Sheffield	Elite
46	Louis	Szymanski	Cycling Sheffield Giant Sheffield	Elite
47	Joe	Evans	Saint Piran	1st
48	William	Harper	Saint Piran	1st
49	Steve	Lampier	Saint Piran	Elite
50	Oliver	Maxwell	Saint Piran	Elite
51	Matthew	Nowell	Saint Piran	1st
52	Alex	Platt	Saint Piran	2nd
53	Joseph	Beckingsale	Wales Racing Academy	2nd
54	Matthew	Burke	Wales Racing Academy	2nd
55	Peter	Kibble	Wales Racing Academy	2nd
56	Joshua	Price	Wales Racing Academy	2nd
57	William	Roberts	Wales Racing Academy	2nd
58	Ben	Barlow	Wheelbase CabTech Castelli	1st
59	Matthew	Clarke	Wheelbase CabTech Castelli	1st
60	Finn	Crockett	Wheelbase CabTech Castelli	1st
61	Harry	Hardcastle	Wheelbase CabTech Castelli	2nd
62	Fraser	Martin	Wheelbase CabTech Castelli	1st
63	William	Orrell-Turner	Wheelbase CabTech Castelli	2nd
64	Joe	Reilly	Wheelbase CabTech Castelli	2nd
65	Elliot	Barratt	BIKESTRONG-KTM	2nd
66	George	Beck	BIKESTRONG-KTM	2nd
67	Luke	Smith	Bioracer - DHL	UCI
68	Dillon	Corkery	Bioracer - DHL	UCI
69	Bob	Donaldson	Fensham Howes - MAS Design	1st J
70	Sam	Watson	Fensham Howes - MAS Design	1st J
71	James	Hill	Team PB Performance	2nd
72	Josh	Housley	Team PB Performance	1st
73	Benjamin	Baugh	Wold Top The Edge RT	2nd
74	Oliver	Cockerill	Wold Top The Edge RT	2nd
75	Aaron	Preston	Cleveland Whls JRT/Catley Lakeman	1st
76	Matthew	Exley	Flamme Rouge Cycling Team	1st
77	Russell	Downing	Giordana Racing	1st
78	William	Perrett	Leisure Lakes Bikes.com	1st
79	Matthew	Taylor	Prologue Racing Team	2nd
80	Isaac	Mundy	Richardsons-Trek RT	Elite
81	Joshua	Wallis	Spalding Cycling Club	1st
82	Jake	Hales	Spirit Tifosi Racing Team	Elite
83	Matthew	Webster	TAAP Cervelo	Elite
84	Kieran	Hotson	TBW23 Stuart Hall Gett Taxi	2nd
85	Andrew	Nichols	Team B38 / Cycles In Motion	1st
86	Fabian	Horrocks	Velo Schils - Interbike RT	2nd
87	Sami	Al Hadid	BC Private Member	2nd

# Event Village Map

- 1 Bar
- 2 Street Food Chef
- 3 Cafe Carte
- 4 Noodle Bar
- 5 Chunky Churros
- 6 Coffee on the Run
- 7 Trek Sheffield
- 8 JE James Cycles
- 9 Ice Cream
- 10 Greedy Greek
- 11 Sunshine Pizza
- 12 Face Painting
- 13 Dark Peak
- 14 Whirlow Hall Farm
- 15 Forge
- 16 JC Bird
- 17 TBC





# Merchandise For Your Marketing Campaign.



t: 0114 275 4150 e: [sales@steel-city.co.uk](mailto:sales@steel-city.co.uk) w: [www.steel-city.co.uk](http://www.steel-city.co.uk)

The Don Press, New Street, Sheffield, South Yorkshire, S1 2DN

PROCO ADVERT



## > Race Officials

Race Director:	Marc Etches
Technical Director:	Jaime Harper
Chief Marshals:	Andrew Reynolds & Matthew Gott
Safety Officer:	Peter Sutton
Logistics:	Chris Lawrence & Peter Root
Chief Commissaire:	Patrick Nestor
Commissaire 2:	Jason Metcalfe
Commissaire 3:	Neil Prendergast
Lead Motorbike:	Alan Laurie
Chief Judge:	Carole Leigh
Judging Team:	Mandy Parker & Paul West
Photofinish Operator:	Mark Young - MY Event Timing
Finish Line Control:	Graham Parker
Signing On:	Kay Lloyd & Jayne Tennick
Gear Check:	Adam Lathbury
VIP Liaison:	Lesley Proctor
Commentator:	Matt Payne
Ceremonies Director:	Vanessa Etches
Crossing Point Marshals:	Sheffrec CC, Rutland CC, B38 Cycles in Motion & CLO CC
First Aid:	A&E Life Support Limited
TV Production:	CycleVox

 @SheffGrandPrix

**For up to date news including tonights results, please visit our official website:**

**[www.sheffieldgrandprix.com](http://www.sheffieldgrandprix.com)**

Event programme design by Blue Strawberry Elephant - [www.bluestrawberrylephant.com](http://www.bluestrawberrylephant.com)

Expertly printed by ProCo - [www.proco.com](http://www.proco.com)



# Sale

## Up To 54% Off Bikes

**JeJamescycles**

Rotherham - Sheffield - Chesterfield



Save  
£2001

**S-Works Roubaix Etap**

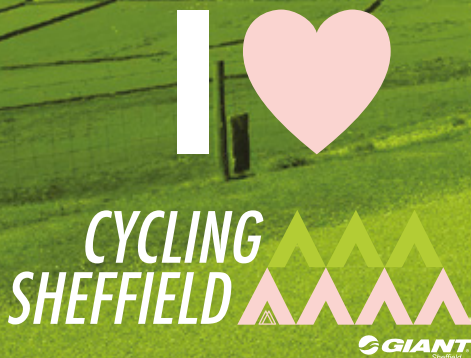
Was £9,000 **Now £6,999**



Save  
£851

**Merida One Sixty 800**

Was £3,150 **Now £2,299**



# Love cycling? Love Sheffield?

We've created a way for you to show your love for two true Yorkshire passions  
- and what's more you'll be supporting our ambitious elite cycling team.

**Want to know more?**

**We have three options available**  
each run for a year from the day you sign up.



## Individual supporter package

Race program and team updates.



## Individual supporter plus package

As the individual, plus CYCLING SHEFFIELD t-shirt, range of promotions and discounts from CYCLING SHEFFIELD partners.



## Corporate supporter package

Race program, team updates, CYCLING SHEFFIELD t-shirt, Sheffield GP VIP passes, attendance at a National B race day, discounts and promotions from partners.

For further information visit:

**[cyclingsheffield.com/supporters](http://cyclingsheffield.com/supporters)**



**BIO RACER**  
**SPEEDWEAR**

Proud Sponsors of  
The Sheffield Grand Prix  
Support Race 2019

# CUSTOM CLOTHING FOR CLUBS & TEAMS

Bioracer are proud to be the market leader in custom cycling wear in Europe. We can help you make the perfect team kit. Bring us your design inspiration, your logos, your colour scheme, and our team of designers will bring your vision to life.

You won't find custom kit that is better value. For its specification, performance and quality it represents truly excellent value for money.

We don't outsource production unlike many of our competitors. Your custom cycle kit will be made in our own Belgian production facility where we have 30 years' experience making custom printed cycle clothing.

**INTERESTED?**



**CONTACT US**

**shop-bioracer.co.uk**



01925 570916



sales@onimpex.co.uk